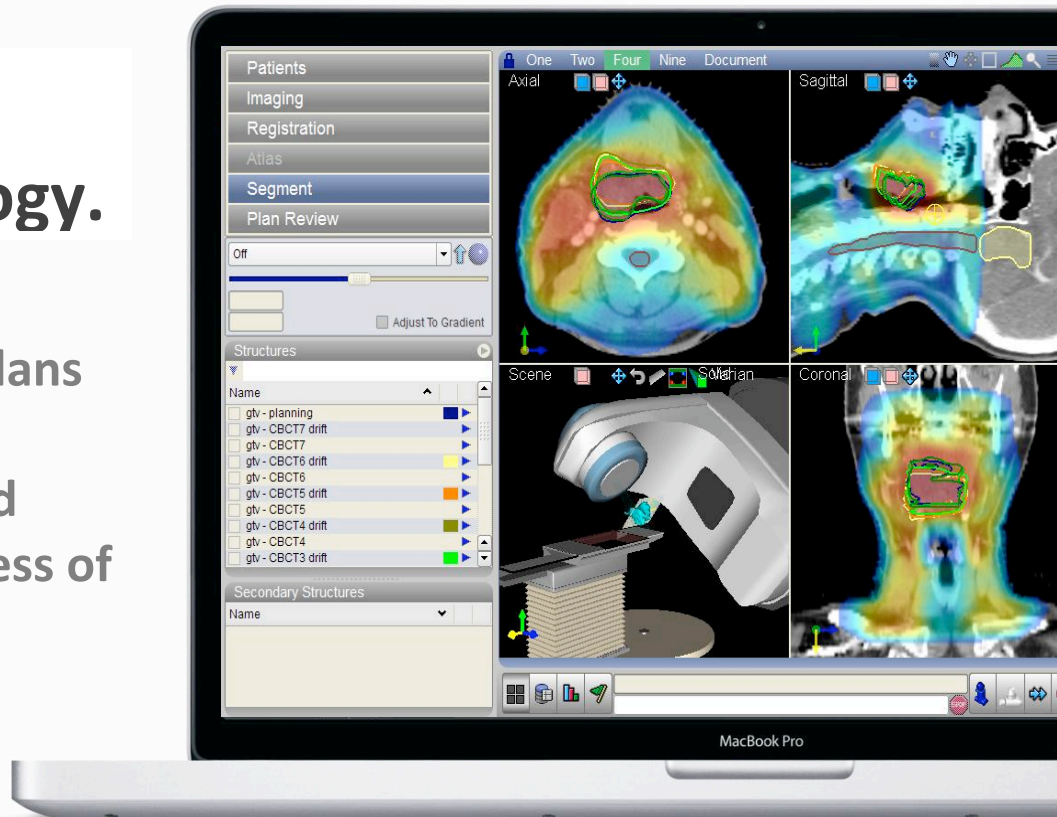


VelocityAI. Built for Oncology.

Enables more rapid creation of therapy plans and provides new methods to adapt and assess the effectiveness of therapy.



Velocity Advanced Imaging (AI) solutions enable physicians to use multi-modality imaging data to develop radiation therapy treatment plans. Rapid image fusion, image processing, and efficient workflow tools in VelocityAI support a variety of clinical applications, including adaptive radiation therapy planning and assessment.

Key Features

- **Multi-modality image registration**
- **Automated atlas-based anatomical segmentation**
- **Adaptive radiation therapy tools**
- **Treatment planning integration**

Deformable fusion

Deform a PET/CT performed in a non-treatment position to the treatment position for revolutionary planning.

Atlas segmentation

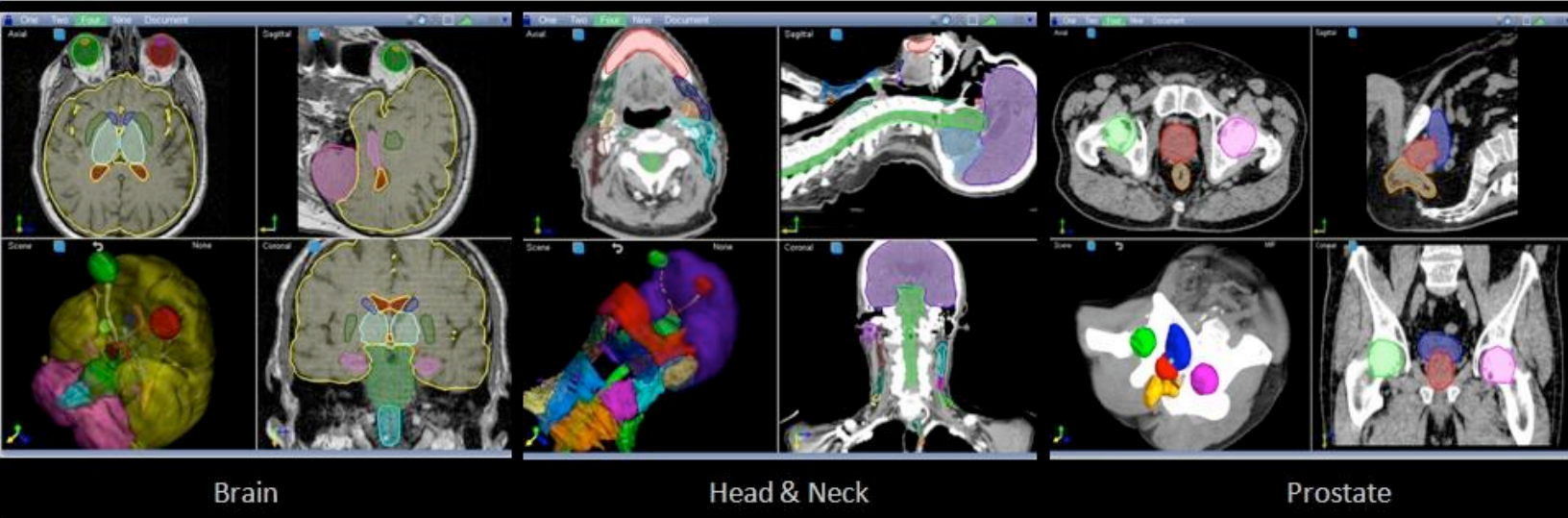
Automated segmentation algorithm provides structures of interest creation in a matter of seconds.

Adaptive Radiation Therapy (ART)

Track anatomical changes between planning CT images and CBCT images acquired during treatment delivery.

Response assessment

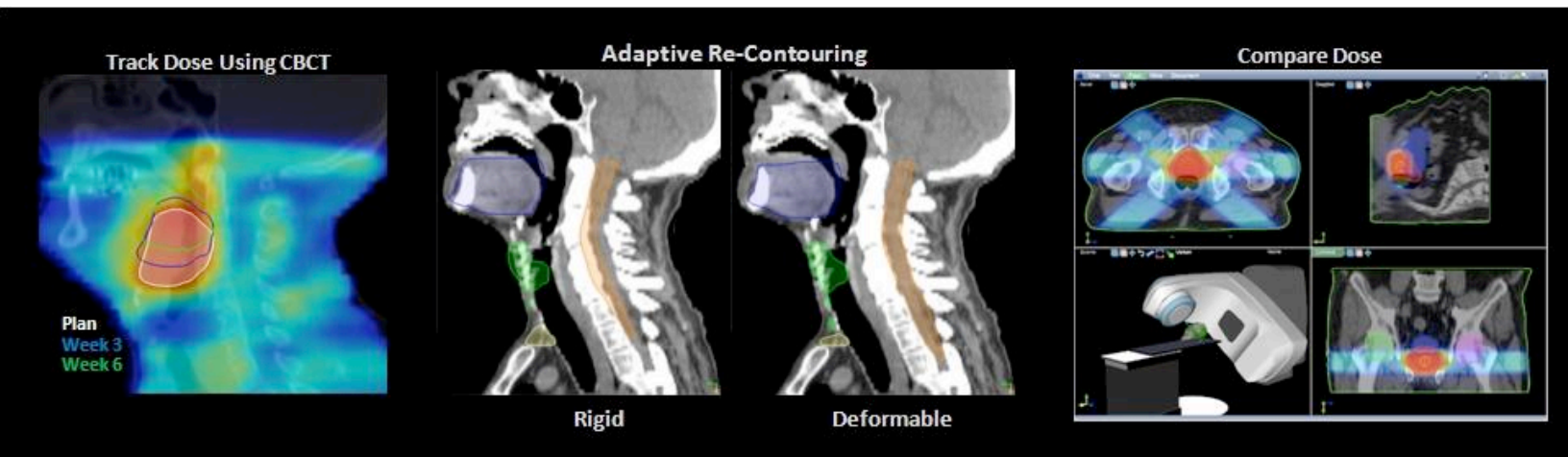
Assess changes in the biologic activity of a patient's cancer over time.



- Automatically register any combination of CT, CBCT, MR, SPECT, PET and DICOM-RT objects
- Use advanced deformation tools with a clinically developed volumetric atlas for maximum efficiency and accuracy for different anatomical sites

Head & Neck • Brain • Prostate • Thorax • Create your own atlas

- Quickly contour PET tumor volumes using SUV and intensity thresholding
- Track dose using CBCT
- Adaptive contour propagation for fast re-planning
- Compare dose across treatment modalities
- Integrate seamlessly with all existing TPS and equipment through DICOM RT
- Use VelocityAI on laptops, tablets or any PC workstation (Mac & Windows)



Velocity Medical Solutions
 Atlanta, GA
 Tel: 404.920.1966
www.velocitymedical.com
info@velocitymedical.com